

2003 Annual O'Neill Show
"Mental Floss"

Master of Ceremonies Becca Atkins

Commercial #1
Written by Anna Maria Trusky
Directed by Becca Atkins

Bob Howard Beatman

Dick Clark's Rockin' Medication Time
Written by Frederick Vaughn
Directed by Catherine Fedeli

Dick Clark Sam Bliven
Nurse Justina Ayles
Tall Billy Matt Olson
Heather Kristina Adcock
Allison Anne Patti
Tootie Debbie Hotham
Trekkie Judith Essex

Commercial #2
Written by Anna Maria Trusky
Directed by Steven Marks

Announcer Becca Atkins
Innocent Bystander SJ Williams

Commercial #3
Written by Anna Maria Trusky
Directed by Becca Atkins

Bob Howard Beatman

Intermission

*Refreshments, tee shirts and buttons
available in the Barn Lobby*

My Big Fat Freak Wedding

Written by Anna Maria Trusky
Directed by Becca Atkins

Tuna Portapottys Anna Maria Trusky
Cuss Portapottys Sam Bliven
Mania Portapottys Anne Patti
Valium SJ Williams
Flashback Tuna Robin Fleming
Girl #1 Dylan Croft
Girl #2 Judith Essex
Sick Portapottys Gerald Cory
Ian Runofthemiller Greg Bliven
Joe Blow Howard Beatman
Pregos Judith Essex
Grandma Lala Marilyn Neale
Sikki Justine Francese
Mary Runofthemiller Dylan Croft
John Runofthemiller Matt Olson
Father Plato Pasticio Special Guest

Act One

Scene One: Zany Zorba's Gouse of Gyros
Scene Two: Auntie Valium's Travel Agency
Scene Three: The Portapottys' kitchen
Scene Four: Ian's Car

Act Two

Scene One: The Portapottys' Living Room
Scene Two: Engagement Party
Scene Three: Preparing for the Ceremony
Scene Four: The Freak Orthodox Church
Scene Five: The Wedding Reception

Production Crew

Producer/Director	Becca Atkins
Stage Manager	Sharon Kitlinski/Robin Fleming
Stage Crew	Tammy and Loretta from NC, Helen Cronin, Debbie Hotham, Tonia Pellegrino, Kristie Adcock, Tracy Goodnow, Deb Cluff
Lighting Design	Jim Stidfole, Becca Atkins
Lights	Jim Stidfole
Sound	Jan Robes
Music/Sound Effects	SJ Williams
Scenery/Props/Costumes	SJ Williams
House Crew & Concessions	Mary Ann Stroich, Tonia Pellegrino, Gary Hotham
Baked Goods	Becca Atkins, Sharon Kitlinski, Helen Cronin, Howard Beatman, Madelyn Schuller, Sue Ponder
Ticket Sales	Becca Atkins
Show Artwork	Mark Connor
Poster/Flyer	SJ Williams
Program Booklet/ Misc. Graphics	Becca Atkins
Well Being Coordinators	JoAnn Sheehan and Rick Gaumer, Robin Fleming, Gary Hotham

Artreach Board of Directors

*President: Susan Morton
Vice President: Sam Bliven
Secretary: Robin Fleming*

*Kathleen LaVallee
Debbie Lehman
Mary Ann Stroich
Anna Maria Trusky*

*Please Support Our Advertisers,
as they have supported us!*

Therapists & Mental Health Services

Becca Atkins, LPC
CT Center for Human
Growth &
Development
Linda Doran,
APRN, CS
First Step, Inc.
L & M Hospital
United Services

Food

Greene's Books &
Beans
Gridlock Grille
Paul's Pasta

Merchants

Caruso Music
Greene's Books &
Beans
Joydon's
Kientzy Jewelry
Leader Store
Olde Mystick
Village
Robert's
Audio/Video
Traditions

Banks

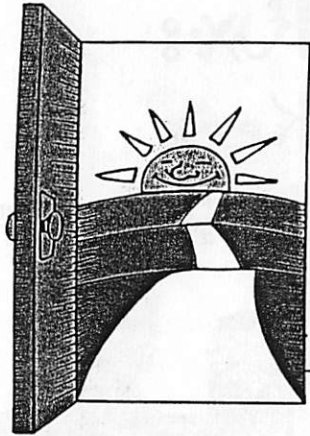
Citizen's Bank
Dime Savings

Miscellaneous Services

Brenda's Hair Care
Camaro Signs
Carper's Chimney
Doherty, Beals &
Banks
Goodfriend's Vet
Therapy Sisters
Willowbrook Golf
Course

Auto

Eurocars
Quality Car
Care
Superior Auto



SMHA

Southeastern Mental
Health Authority

"Opening the door to recovery"

Brief Care Program • Mobile Outreach Team
ACCESS Team • Life Skills Program
Young Adult Services
Community Support Program
Intensive Clinical Case Management
Homeless Outreach ACT Program
Forensic Services • Jail Diversion Services
Housing Office
Consumer/Family Liaison

SMHA is a State of Connecticut,
Dept. of Mental Health & Addiction
Services CARF accredited facility.
Accredited in:

Mental Health Programs: Assertive
Community Treatment, Case
Management, Crisis Intervention,
Residential Treatment
Alcohol and Other Drug Programs:
Detoxification

401 W. Thames. St., Norwich, CT
(860) 859-4500

Special thanks to:

Mark Connor, for wonderful artwork
Anna Maria Trusky for script
Frederick Vaughn for script
Leader Stores for loaning us the recliner
Coca Cola for donating soda
Camaro Signs for Will's banner
Mr. Pizza, for donating pizza to the
"Help Will Foot the Bill" party

Many Thanks to all of you who donated to Will's medical fund!

Kevin & Kathy McMahon	Mr. Pizza
Margaret Tyler	Justina Ayles
Dierdre O'Connor	Alissa Desmarais
Mary Ann Stroich	Kelly Cunningham
VAdm & Mrs. Williams	Marcia Bohannon
Jack Malone	Sam Bliven
James Carper	Connie Bement
Helen Cronin	Greg Bliven
Cynthia McTyre	Cathy DeVeau
Ira & Monica Sakalsky	Norman & Kathy LaVallee
Anna & Paul Trusky	Robin Fleming
John & Maggie Heil	Sue Ponder
Stewart Williams	Laurie & Joe DiPaola
Mary Briones	Jenny Honen
Hans Lohse	Donna Berman
Kris Dierrico	Joe & Pam DiFiore
Kato McNickle	Dianne & Ed Halleck-
Deb Cluff	Strycharz
Marilyn Neale	Phil rouse
John Skawinski	Jean W. Wahl
Sharon Kitlinski	Mary Forster
Heidi Boehm	The Mereen Family
Robin Gilmartin	Madelyn Schuller
Diane Mack	Ned Ruete
Rick & Andrea Stannard	Robert and Joyce Rabatin
John & Linda Sacha	Kathleen Martin
Camaro Signs	Lori Pacific

THE COUNSELING CENTER AT LAWRENCE & MEMORIAL

Our skilled staff are now
accepting appointments
for the treatment of:

Depression
Anxiety
Marital Problems
Panic Disorder
Eating Disorder
Self-esteem Issues
Sleep Disorders
Obsessive Compulsion
Family Therapy
Senior Issues

Most insurances accepted

Day or evening appointments
are now available at two
convenient locations:

Lawrence & Memorial Hospital
365 Montauk Ave., New London
(860)442-0711, ext. 5127

Pequot Health Center
52 Hazelnut Hill Road, Groton
(860) 446-8265, ext. 7015

**LAWRENCE
& MEMORIAL** 

The more you know about healthcare,
the more you'll like L&M.
www.lmhospital.org

DIAMONDS • GOLD • WATCHES PRECIOUS STONES



Joseph S. Parzych
President

48 State Street
New London, CT 06320

(860) 443-7792

JOYDON'S HOUSE OF LEISURE

COINS • STAMPS
SPORTS CARDS * COMICS
ESTATE JEWELRY
COLLECTIBLES

*Area's Leading Buyer
of Gold and Silver
For Over 40 Years*

**WE BUY, SELL and TRADE
Anything The World Collects**

24 Eugene O'Neill Drive
New London, CT 06320

443-5887

Rx:
Keep
acting out!



www.TheTherapySisters.com

GOOD LUCK

ARTREACH & THE SECOND STEP PLAYERS

FROM



PROVIDING

CASE MANAGEMENT EMPLOYMENT SERVICES
BENT CRANDALL PROGRAM COMMUNITY EDUCATION
COMMUNITY SUPPORT SERVICES
SUPERVISED APARTMENT PROGRAM
OASIS-PSYCHOSOCIAL REHABILITATION

Furniture Bedding Floor Covering

LEADER STORES

Navick Brothers

Since 1910

Murray Navick
Home: (860) 889-6490

233-255 Central
Norwich, CT 06360
(860) 887-1666
Fax: (860) 887-3926

*"Your Family Will Love Doing
Business With Our Family"*

Linda Doran

A.P.R.N., C.S.

Counseling and Psychotherapy

14-14 Mason's Island Road
Mystic, Connecticut 06355

860-536-8804
By Appointment

*Break a Leg,
Second Step
Players!*

Brenda's Hair Care
Stonington, CT

536-7564

How Can My Telephone
Make Money for
The Second Step Players?
It's easy, if you use SNET!

SNET has pledged to give
Artreach 5 cents for every
dollar you spend on the long
distance calls you make from
your phone - at NO COST TO
YOU!

Call

1-800-635-7638

and tell them you want to
enroll in the
Community Connections
Program.

Our code number is 3373.



Carper's Chimney Service

Cleanings, Repairs

James R. Carper
CT License #00560223
(860) 204-9820



THE CONNECTICUT CENTER

For Human Growth & Development

- GESTALT • BIOENERGETICS •
- PSYCHODRAMA • EMDR •

244 South Main Street, Colchester, CT 06415
Call for Information: 860-537-3977

GRIDLOCK Grille



Home of the 9 lb. Lobster!

Serving

- Breakfast
- Lunch
- Dinner

Open Daily at 7:30 am

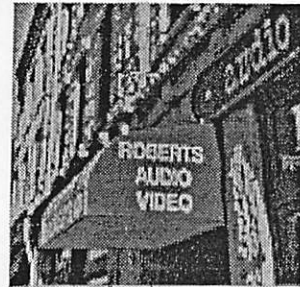
566 Colman Street
New London, CT 06320

860-442-0033

len_s_foods@sbcglobal.net
www.gridlockgrille.com

One Touch to Music!

- Home Automation
- Home Installation
- Used Stereo
- Home Theater
- Networking
- Multi-room Audio
- Pre-Wire New Homes
- In-Store Repair
- Plasma Flat TV
- Established 1934



ROBERTS Audio • Video
90 Bank Street New London

www.robertsav.com
442-5314

**DOHERTY
&
BANKS, P.C.**
CERTIFIED PUBLIC
ACCOUNTANTS

Serving your accounting and tax needs since 1948
187 Williams Street, New London, CT 06320

Carved Signs
CAMARO Signs
SINCE 1968
www.camarosigns.com

All types of signs, large format printing & laminating

58 Yantic Flats Rd., Yantic, CT 06389
860-886-1553 fax 860-886-2613

 **CITIZENS BANK**

Citizens Bank of Connecticut
32 Boston Post Road
Waterford, CT 06385



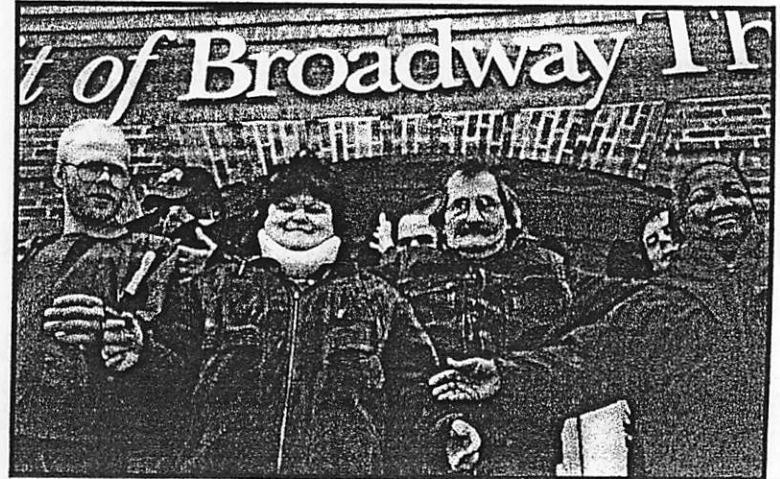
860 444-3560
INFO-LINE 800 922-9999

Work Hard Play Hard

Work Hard/Play Hard is a special and exciting recreation program open to all mental health consumers who are either employed or in the process of gaining the skills necessary to obtain and keep a job. The program is special in several ways; it is primarily consumer run; all events take place entirely in the community; door-to-door transportation is provided to and from all events; and the variety and quality of recreational events provided are exceptional.

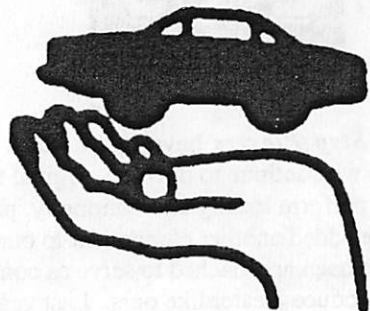
Recreational events take place on evenings and weekends. Some of our favorite events this year have been the Connecticut Sun games, Coast Guard concerts and other musical events, plays at the Granite Theater and the Garde Arts Center, pottery, and community events such as Sailfest and the local art shows and festivals. Our weekly bowling and shopping trips are also well attended.

For additional information, pick up a brochure from the Button and T-Shirt Table in the lobby.



TRANSMISSIONS

CUSTOM EXHAUST



Superior Auto Center

92 Stonington Road, Route 2
Norwich, CT 06360

24 Hour Wrecker Service!

Telephone 889-4151

If Busy, Call 887-1103

DANIELLE KOLASHUK

RON DAIGNEAULT

In recognition of the dedication of the Second Step Players,
the volunteers and fellow donors, we give a

Standing vation. THE Dime Bank

MEMBER
FDIC

www.dimesavingsbank.com

EQUAL
HOUSING
LENDER

GREENE'S BOOKS & BEANS

Where Spirit and Mind Meet

Jewelry • Candles • Crystals
Greeting Cards • Incense • Gifts
Coffees • Teas • Chai • Espresso

Phone: 443-3312
140 Bank Street, New London, CT 06320



Upcoming Second Step Players
and Artreach sponsored events at the
Donald Oat Theater, 62 Broadway (3rd Floor),
Norwich, CT

November 1, 2003: Therapy Sisters Concert!!

"If laughter is the best medicine, then The Therapy Sisters are a two-woman dispensary." *Denver Post*

"Better than Prozac." *Fort Worth Star Telegram*

Need I say more? See you there!

November 14 & 15, 2003

Debut of Second Step Players
2003/2004 Touring Show!

"One Flew Over the Cuckoo's Nest meets Saturday Night Live..." *The Hartford Courant; Hartford, CT*

"This is theater at its best; rich, funny, touching, always surprising." *Norwich Bulletin; Norwich, CT*

Call Becca at 860-887-0014 for more information.



WILLOWBROOK GOLF COURSE

124 Brookfield Street
South Windsor, CT 06074

Telephone: (860) 648-2061
Fax: (860) 648-2680

www.willowbrookgc.net

Goodfriends Veterinary Clinic



339 Flanders Road, Suite 104
Flanders Four Corners
East Lyme, CT 06333

(860) 739-4637

Caruso Music

Dedicated to musicians and the
performing arts
for over 70 years

Pianos, Keyboards, Guitars, Amps, Drums,
Lights, P.A. Systems, Recording Equipment
and much more.

Call 443-6810
for the Caruso School of Music
Lessons for all instruments

Call: (860) 442-9600
FAX: (860) 442-0463
94 State St.
New London, CT 06320

E-mail: sales@carusomusic.com
<http://www.carusomusic.com>



The Second Step Players have had a busy, fruitful, and challenging year. As we continue to develop original theater about mental health issues, perform locally and nationally, present music and art stuff, etc., we have added another component to our program.

Lately we have been approached to serve as consultants for other groups who want to produce theater like ours. Last year Becca served as a consultant for the newly developing *Underground Players*, a theater troupe out of Common Ground, a clubhouse in the East Hartford area.

This year we have two people from Shelby, NC who are working on our stage crew as the first step in the process of starting their own theater troupe. They plan to use theater to educate local employers to reduce stigma and negative stereotyping in order to create a broader base of businesses that will hire people who have psychiatric diagnoses. Tammy and Loretta, from Adventure House, are living up the to "Adventure" part of their name! They've been with *The Second Step Players* all week - from loading the van, to surviving long nights of technical and dress rehearsals, to being fully active participants on the back stage crew.

You may have heard through the grapevine that Becca took a leave of absence from *The Second Step Players* this winter to fill in at Eastern Connecticut State University in its Counseling Center. Although she loved working with her colleagues and the students at ECSU, she ultimately discovered "there's no place like home. . ." - so Becca is back as Director of *The Second Step Players*, and also has a part time private psychotherapy practice in West Hartford.

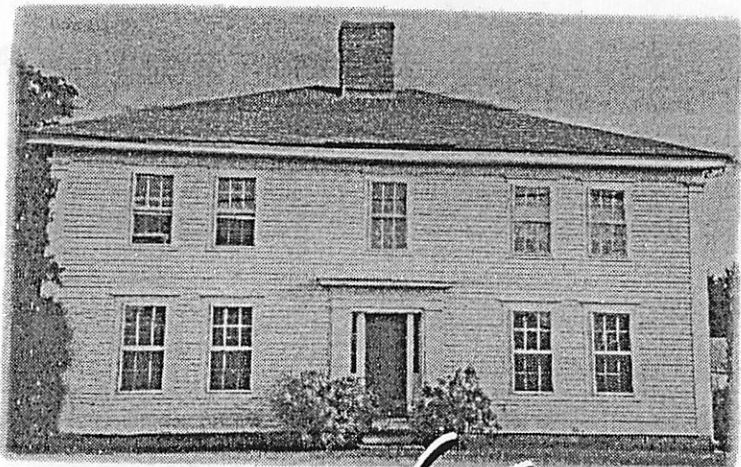
SJ continues to create video projects, working on short films locally and putting together documentary style pieces to help people tell their recovery stories, for who better to explain the recovery process than someone who has been there, done that?

To inquire about booking *The Second Step Players* for a performance or a Hearing Voices Workshop, please call Becca Atkins at (860) 887-0014.

HEY, WE'RE ON-LINE!!

Check out our website: www.artreachheals.org

E-mail: becca@artreachheals.org
sj@artreachheals.org



Traditions

Kristin Avery and Martha Reed, former owners of *Traditions Bridal and Formal Wear* of Norwich, have moved their business to a colonial home with fireplaces and cozy rooms at 85 Bridge Road, Haddam. While remaining one of the few **full-service bridal stores in CT**, the move allows them to represent new designers and collections. Traditions now features "special occasion clothing" for bridal parties as well as tuxedos, prom wear and event dressing.

Open Tuesday - Saturday • 860-345-7750
85 Bridge Road, Route 82, Haddam, CT
www.traditionsofhaddam.com

Auto Detailing
by



DiFiore's Quality Car Care



- Hand Washing
- Compounding, Interior shampooing, Polishing & waxing
- Odor and smoke removal
- Gift certificates
- Free pick-up & Delivery (Norwich)

Old Cars Like New!

New Cars Better than New!

BONDED & INSURED
FREE ESTIMATES

886-8151



EUROCARS⁺ SALES & SERVICE

- All cars include 12 months/12,000 mile major drivetrain warranty.
- Additional warranties available.
- All cars fully serviced and inspected.
- Financing available.

444-2001

Mark Bussolotti
Owner

538 Poquonnock Road
Groton, CT 06340
www.eurocarsplus.com

Announcing the Opening of my Private Practice!

Becca Atkins, MA, LPC
Psychotherapist



Therapy for:

- *Depression*
- *Anxiety*
- *Trauma related issues*
- *Eating disorders*
- *Life transitions*
- *Personal growth*

17 South Highland Street • West Hartford, CT 06119

For more information or to schedule an appointment, call

(860) 367-7177

Sliding fee scale available.

*Best Wishes
for another successful
performance
at the Eugene O' Neill Theater!*

*from
Friends in
Kennett Square, PA*

Artreach
...because creativity heals...

ARTREACH MISSION STATEMENT

Artreach promotes healing through creativity and support of individuals with psychiatric diagnoses and their families, and challenges stigma through community education.

STATEMENT OF PURPOSE

Artreach, Inc. believes that creativity and recreation in all their forms are profoundly empowering and consequently healing endeavors. We support people who have experienced psychiatric, physical and developmental disabilities to become performers, artists, musicians and writers or to expand their ability to recreate. As a results oriented organization, Artreach's goals are to:

- ** Empower people who have experienced disabilities to create a culture of their own using role models that come from their own ranks; to celebrate their strengths and encourage them in their struggles by creating art forms that speak to their experiences and values;
- ** Educate the general public and future generations, through the use of cultural activities, about the value of people regardless of how they are labeled or disabled;
- ** Produce and tour high quality published work, artistic exhibitions, musical recordings and performances, and theatrical events, primarily, using artistic and production personnel who have experienced psychiatric disabilities;
- ** Provide high quality training to artists and production personnel who have experienced disabilities;
- ** Provide training to other professionals in the technology involved in the production of artistic events using artistic and production personnel who have experience d disabilities;
- ** Expand the community based recreational opportunities available to people who have experienced disabilities;
- ** Develop technologies and strategies to support people who have experienced disabilities to integrate into existing community based recreational opportunities;
- ** Educate the general public and the "disability community" about the essential and pivotal role recreation plays in a complete and fulfilling life for people with or without disabilities.
- ** Through artistic, cultural and recreational activities, encourage consumers to acquire and actively implement into their lives socialization skills necessary to community integration and obtaining and keeping employment.



445-5276

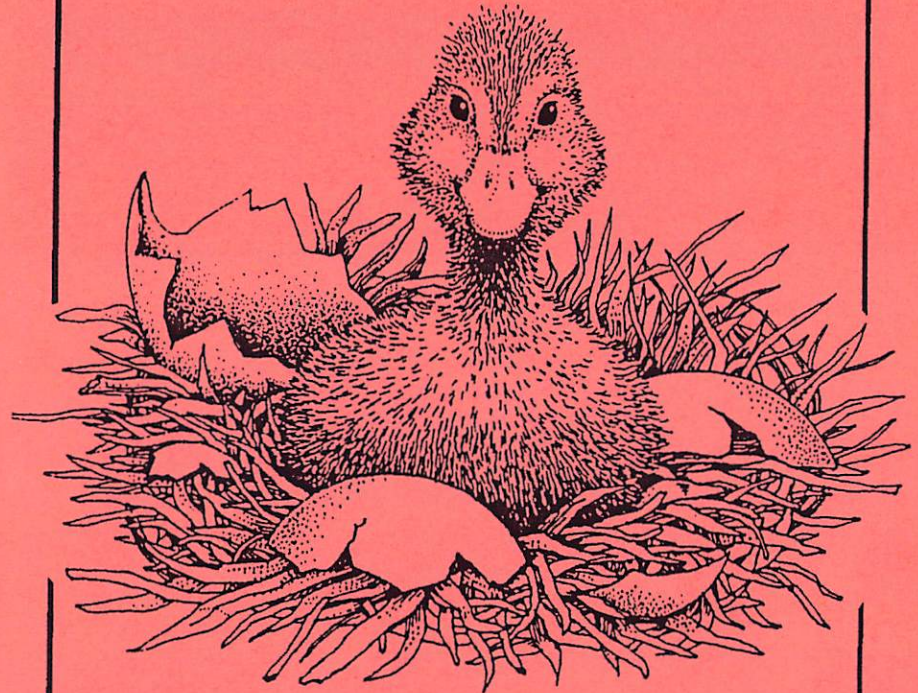
223 THAMES ST., GROTON

**Specializing In:
Freshly Made Pasta And
Pasta Accompaniments**

**Enjoy Lunch Or Dinner
Inside Or On Our Deck
Or Take Home A Lb. Of
Our Pasta And One Of Our
Own Sauces**

VOTED BEST VALUE IN NEW LONDON COUNTY
READER'S CHOICE AWARD-CONNECTICUT MAGAZINE
8 out of the last 10 years!

TAKE OUT MENU • RETAIL • CATERING



**Discover a Magical Moment
at Olde Mistick Village**

From the moment you arrive at Olde Mistick Village a special feeling comes over you.

Duck ponds, flower gardens and more than 60 quaint village shops transport you into an enchanting world of 19th century charm. Here you'll discover unique and wondrous items and gifts from all over the

world.

Come wander through Olde Mistick Village and feel the magic.

For a complimentary special events calendar, call or write: Olde Mistick Village, PO Box 176, Mystic, CT 06355 (860) 536-4941.

Olde Mistick Village



UNITED SERVICES, INC.

creating healthy communities

www.unitedservicesct.org

1007 N. Main Street Dayville, CT 06241 860-774-2020	132 Mansfield Avenue Willimantic, CT 06226 860-456-2261	233 Route 6 Columbia, CT 06237 860-228-4480	303 Putnam Road Wauregan, CT 06387 860-564-6100
---	---	---	---

United Services Inc. is Connecticut's most comprehensive nonprofit behavioral health center and serves the twenty-one northeastern Connecticut communities.

"Creating Healthy Communities"

The Center currently has four major sites, Dayville, Columbia, Wauregan and Willimantic plus numerous off-site programs. A staff of over 250 includes licensed psychiatrists, social workers, marriage and family therapists, certified substance abuse counselors, case managers, prevention specialists and employee assistance professionals. United Services holds a three-year accreditation from the Joint Commission on Accreditation of Healthcare Organizations.

Clinical Services

Adult Behavioral Health Outpatient Services - Addiction Recovery Outpatient Services - Children and Family Behavioral Health Treatment - Emergency Mobile Psychiatric Services - Crisis Assessments - Jail Diversion Services

Continuing Care Services

Assertive Community Treatment (ACT) Team - Case Management Services - Domestic Violence Program - Family Violence Outreach Services - Social and Vocational Rehabilitation Programs - Residential Services and Supports

Prevention and Early Intervention Services

Communities Raising Children/Care Coordination - Community Housing/Living Skills Assistance - Early Childhood Consultation - Intensive Family Preservation and Reunification - Juvenile Justice Center - Multicultural Parent Support Center - Parent Aide Services - School to Employment Program - Teen Pregnancy Prevention - Wayside Adolescents in Crisis - Youth Services Bureau - Youth Clubs

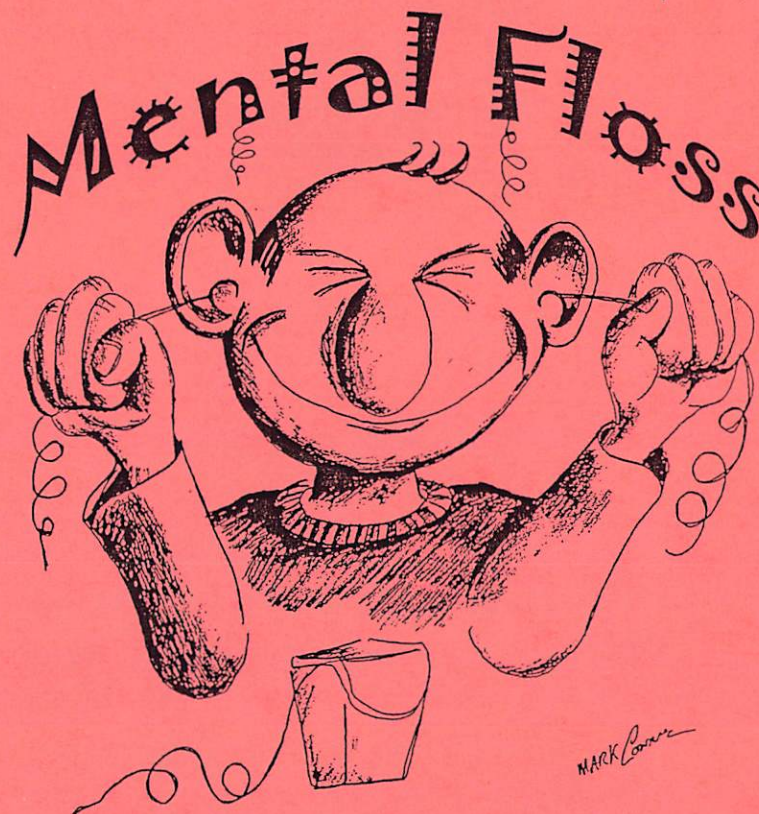
Services to Business and Industry

Employee Assistance Program with two components: Employer Consultation Services and Employee Counseling Services. A Consortium Model meets the needs of small organizations (under 100 employees). Specific trainings are available for employers without an EAP contract.

Psychiatric Services

Provided by four staff psychiatrists to serve adults, adolescents, and children.

Artreach, Inc. *presents* *The Second Step Players*



... another relevant & irreverent look at mental illness...

Our 17th annual show at
**The Eugene O'Neill Memorial
Theater Center**

September 18, 19 and 20, 2003
7:30 pm