

12

**ACT ONE**

**Master of Ceremonies** Becca Atkins, & special guests  
*The Therapy Sisters,*  
Lisa Rogers & Maurine McLean

**Flag Day in  
Dysfunction Junction**

*Written by* Kato McNickle  
*Directed by* Alan Spaulding

*Mama* Marilyn Neale  
*Daddy* Howard Beatman  
*Nettie* SJ Williams  
*Sylver* Dolores Lewis  
*Alyssa* Kathy LaVallee  
*Billy George Joe Bob* Matt Olson  
*Uncle Bubba* Bob Davidson

**Scenes From The ER**

*All ER Scenes Written by* Matt Olson, Justine Francese  
and Becca Atkins

*Directed by* Becca Atkins and SJ Williams

*Mom* Debbie Lehman  
*Carol* Chelsea Lehman  
*Triage Nurse* Kathy LaVallee

**When You Were Here**

*Written by* Maimuna Daffeh  
*Directed by* Becca Atkins

*Pearl Barnes ("Grannie")* Dolores Lewis  
*James Barnes* Gregoire Mouning  
*Marcia Barnes* Beatrice White  
*Keisa Barnes* Maimuna Daffeh  
*Angel Lou* Sylvia Baird

**Scenes from the ER #2**

*Mom* Debbie Lehman  
*Carol* Chelsea Lehman  
*Triage Nurse* Kathy LaVallee  
*ER Nurse* Dylan Croft  
*Security Guard* Gerald Cory

13

**ACT ONE, continued**

**The Best Policy**

*Written by* Frederick Vaughn  
*Directed by* Steven Marks

*Hutch* Howard Beatman  
*Dawn* Kathy LaVallee  
*Nick* Matt Olson  
*Laura* Dylan Croft  
*Linda* Justina Ayles  
*Doug* Sam Bliven

**Scenes from the ER #3**

*Linda* Justina Ayles  
*Nick* Matt Olson  
*Triage Nurse* Kathy LaVallee  
*Carol* Dylan Croft  
*ER Nurse* Chelsea Lehman  
*Mom* Debbie Lehman  
*Hospital Aides* Roland Madore & Robin Fleming  
*Security Guard* Gerald Cory

**Intermission 15 minutes**  
**Refreshments available in the lobby**

**ACT TWO**

**Scenes from the ER #4**

*Carol* Chelsea Lehman  
*Mom* Debbie Lehman  
*Aliens* Dan Gamache & SJ Williams

**Who Wants to Be a Zillionaire!**

*Written by* Melanie Green & Becca Atkins  
*Directed by* Becca Atkins

*Bevis Clothespin* Sam Bliven  
*Chuck, the Announcer* Richard LaBoue  
*Frankie* Tonia Pellegrino  
*Mr. Banks* Gerald Cory  
*Betty* Dylan Croft  
*Donna* Judy Essex  
*Vanna Palmer* Helen Cronin

14

**ACT TWO, continued**

**Scenes from the ER #5**

*Carol* Chelsea Lehman  
*Hospital Aides* Roland Madore & Robin Fleming

**Alien Therapy**

*Written by* Catherine Fedeli  
*Directed by* Catherine Fedeli

*Dersan* SJ Williams  
*Fivel* Dan Gamache  
*Henry* Russell Dykema  
*Melody* Justine Francese  
*Jake* Chelsea Lehman  
*Ken* Howard Beatman  
*The Therapist* Gayle Hansley  
*Hospital Aide* Roland Madore

**Scenes from the ER #6**

*Carol* Chelsea Lehman  
*Mom* Debbie Lehman  
*Physician* Justine Francese  
*ER Nurse* Dylan Croft  
*Nurse with Blood Pressure Cuff* Marilyn Neale  
*Nurse with Bedpan* Kathy LaVallee  
*Nurse with IV rack* Roland Madore

**Will I Be In A Trance?** Melanie Green

**Scenes from The ER #7**

*Carol* Chelsea Lehman  
*Mom* Debbie Lehman  
*Marcia Barnes* Beatrice White  
*Nurse with Blood Pressure Cuff* Marilyn Neale  
*Mobile Crisis Unit Worker* Tonia Pellegrino

**Recovery Rap**

*Written by* SJ Williams  
*Vocals* Becca Atkins  
SJ Williams  
*Guitar* Lisa Rogers  
*Bass Guitar* SJ Williams  
*Drum Program* SJ Williams

17

**ARTREACH  
Board Members**

Sylvia Baird                      Gayle Hansley  
Ruth Barrie                      Debbie Lehman  
Sam Bliven                        Susan Morton  
Gerald Cory                       Sue Ponder  
Dylan Croft                        Dr. Peter Rosenberg  
Justine Francese                  Frederick Vaughn

*Special Thanks to...*

- Maurine McLean and Lisa Rogers for all around support.
- The CT Department of Mental Health and Addiction Services for funding for the Second Step Players.
- The Southeastern Mental Health Authority for all around general support.
- Sue Ponder for costumes.
- Dan Ponder for his incredible woodworking skills.
- Volunteers who baked cookies and brownies for sale during intermission.
- Everyone who worked on House Crew.
- Reid MacCluggage and The Day for donating advertising space.
- JoAnn Sheehan and Rick Gaumer for catering the actors' "well-being."
- Beth Roberts and Laurie DiPaola for script input.
- David Daniels for coming up with the show title.
- Linda Sacha for makeup.
- Coca-Cola for donating soda.
- Monique Brook and WHPX (Channel 26) in New London for featuring The Second Step Players on *For the Record*.
- CT Public Television for featuring The Second Step Players on *Connecticut Journal*.
- David Conaway and Ron McGory for having The Second Step Players on *Theatre Newz*.
- Pia Steffenson for holding the Basket Raffle and donating the proceeds to Artreach.

**Community Support helps us thrive!!  
Thank You!!!**



## CONTACT

of Southeastern Connecticut, Inc.

*Helping people by really listening...*

### Daily CONTACT

Last year volunteers made over 12,000 calls to check on client's safety, to remind of medication or to drink & eat regularly. Daily calls also serve as an opportunity to orient clients and as a social link.

### Telephone HELPLINE

Last year CONTACT HELPLINE volunteers received over 12,000 calls concerning issues of daily life. Trained CONTACT volunteers take the time to actively listen and understand callers.

### Care for CAREGIVERS

This program provides service to primary caregivers. Care For CAREGIVERS volunteers help relieve the stress, isolation and anxiety of those caring for loved ones.

### TRAINING Seminars

CONTACT's comprehensive training, with assistance from community professionals, help attendees learn to respond confidently to various issues and with empathic listening.

**BUSINESS OFFICE # 447-1126 HELPLINE # 848-1281**



**Good Luck,  
Second Step Players!!!**

*from*  
**Your Friends at  
RELIANCE HOUSE**



## Production Crew

Producer/Director	Becca Atkins
Stage Manager	SJ Williams
Stage Crew	Roland Madore, Robin Fleming, Bob Davidson, Russell Dykema, Helen Cronin, Pia Steffenson, Lisa Rogers and Becca Atkins
Load-in Crew	Becca Atkins, SJ Williams, Sharon Kitlinski, Howard Beatman, Steven Marks, Deb Cluff, Jim Stidfole, Pia Steffenson
Lighting Design	Jim Stidfole and Becca Atkins
Lights	Jim Stidfole
Sound	Deb Cluff
Music/ Sound Effects	SJ Williams
Scenery/Props/ Costumes	SJ Williams, Sue Ponder, Dan Ponder, Howard Beatman and Becca Atkins
Make-up	Linda Sacha, Alan Spaulding, Becca Atkins, Kathy LaVallee, Justine Francese
House Crew & Concessions	Rose Sistare, Marshall Robishaw, Cynthia McTyre, Richard Shope, Ada Amaro, Roberta Hurley, Doug Bartowski, Gina Smith
Baked Goods	Dolores Lewis, Sharon Kitlinski, Becca Atkins, Sue Ponder
Ticket Sales	Becca Atkins
Poster/Program Booklet/ Misc. Graphics	Becca Atkins, with Nut Artwork by Kato McNickle "Soup to Nuts" logo by SJ Williams, with Nuts by Kato
Ad Sales/Promotion	Carol Lamchik, Dylan Croft, Sharon Kitlinski, SJ Williams, Becca Atkins
Video	Alan Spaulding & Steven Marks
Well-Being Coordinators	JoAnn Sheehan & Rick Gaumer





**THE CONNECTICUT CENTER**  
For Human Growth & Development

**-GESTALT-BIOENERGETICS-  
PSYCHODRAMA-EMDR**

244 South Main Street, Colchester, CT 06415  
Call for Information: 860-537-3977



## Carper's Chimney Service

Cleanings, Repairs

James R. Carper  
CT License #00560223  
(860) 204-9820

## Goodfriends Veterinary Clinic

Jean M. Lasser, V.M.D.  
Marcy Strange, D.V.M.  
Dan Hochman, D.V.M.

339 Flanders Rd., Suite 104  
Flanders Four Corners  
East Lyme, CT 06333

(860) 739-4637



## THE EMPORIUM

At the Beginning of Mystic's Historic District ...

**Luxuries for the Body, Mind, Soul & Home**

turn off W. Main onto historic Water Street • Open 7 days year round  
15 Water St., Mystic, CT • 06355 • 536-3891



860-886-1874  
82 Whipple Avenue  
Norwich, CT 06360  
www.ccdogduds.com  
sueponderk9@snet.net

## Digital Dogs

Digital photographs of your best friend - costumes available by appointment.  
All Pet Custom Clothes & Costumes

# Mystic Disc

*Rare Music  
and Posters*

Import CDs  
Rare Stuff & LPs

(860) 536-1312

*Where the Music Still Matters*

10 Steamboat Wharf  
Mystic, CT 06355

Visit Our Web Site At  
[www.mysticdisc.com](http://www.mysticdisc.com)

FAX (860) 536-8957

# Caruso Music

Dedicated to musicians and the  
performing arts  
for over 60 years

Keyboards, Guitars, Amps, Drums, Lights,  
P.A. Systems, Recording Equipment and  
much more.

Call 443-6810  
for the Caruso School of Music  
Lessons for all instruments

Call: (860) 442-9600  
FAX: (860) 442-0463  
94 State St.

New London, CT 06320

E-mail: [sales@caruso.net](mailto:sales@caruso.net)  
<http://www.caruso.net>



**aspire**  
PICTURES

**Alan Spaulding**  
Producer/Director

20 Park Terrace #1  
Hartford, CT 06106  
p. (860) 525-1174  
c. (860) 796-8216

[alan@aspirepictures.com](mailto:alan@aspirepictures.com)  
[www.aspirepictures.com](http://www.aspirepictures.com)



**445-5276**

223 THAMES ST., GROTON

**Specializing In:  
Freshly Made Pasta And  
Pasta Accompaniments**

**Enjoy Lunch Or Dinner  
Inside Or On Our Deck  
Or Take Home A Lb. Of  
Our Pasta And One Of Our  
Own Sauces**

VOTED BEST VALUE IN NEW LONDON COUNTY  
READER'S CHOICE AWARD-CONNECTICUT MAGAZINE  
8 out of the last 10 years!

**TAKE OUT MENU • RETAIL • CATERING**

17

**DOHERTY  
BEALS &  
BANKS, P.C.**  
CERTIFIED PUBLIC  
ACCOUNTANTS

*Serving your accounting and tax needs since 1948*  
187 Williams Street, New London, CT 06320 443-2033

**POWELL LATHROP ORKNEY & GREEN  
INSURANCE**

**Edward Green, LUTC, CIC** Vice President

Tel: 860-535-1859

Fax: 860-535-4819

Voice Mail: 860-535-1702

P.O. Box 311

132 Water St.

Stonington, CT 06378



**GOOD LUCK  
ARTREACH & THE SECOND STEP PLAYERS**

FROM

**FIRST  
STEP**  
INC

**PROVIDING:**

CASE MANAGEMENT

COMMUNITY SUPPORT SERVICES

THE BENT CRANDALL PROGRAM

SUPPORTED APARTMENT PROGRAM

EMPLOYMENT SERVICES

OASIS-PSYCHOSOCIAL REHABILITATION

COMMUNITY EDUCATION

38 GREEN STREET, P.O. BOX 2170, NEW LONDON, CT 06320, 860 442 4289

Transmissions

Custom Exhaust



# Superior Auto Center

92 Stonington Road, Route 2  
Norwich, CT 06360

**24 Hour Wrecker Service!**

Telephone 889-4151  
If Busy, Call 887-1103

Danielle Kolashuk

Ron Daigneault

Linda Doran

A.P.R.N., C.S.

Counseling and Psychotherapy

14-14 Mason's Island Rd.  
Mystic, Connecticut 06355

860-536-8804  
By Appointment

from the author of "The Best Policy" . . .

## MANIA

Frederick Vaughn's Manic Depressive  
Superteen Sensation!

Get stories via e-mail.

To subscribe, e-mail [BerdacheZines@hotmail.com](mailto:BerdacheZines@hotmail.com)

Break a Leg,  
Second Step Players!  
Brenda's Hair Care Stonington, CT  
536-7564

**DIAMONDS • GOLD • PRECIOUS STONES  
WATCHES**



Joseph S. Parzych  
President

48 Captains Walk  
New London, CT 06320

(860) 443-7792

## JOYDON'S HOUSE OF LEISURE

COINS • STAMPS  
SPORTS CARDS • COMICS  
ESTATE JEWELRY  
COLLECTIBLES

Area's Leading Buyer  
of Gold and Silver  
For Over 40 Years

WE BUY, SELL and TRADE  
Anything The World Collects

24 Eugene O'Neill Drive  
New London, CT 06320  
443-5887

## THE Dime Savings Bank

MEMBER FDIC

*Come Home to the Dime.*

Corporate **859-4300**

East Lyme **739-2192**

Ledyard **464-8925**

Montville **848-0659**

Norwich **892-4047**

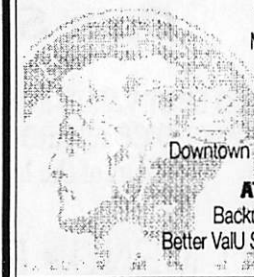
Taftville **887-0554**

Downtown Norwich **889-2318**

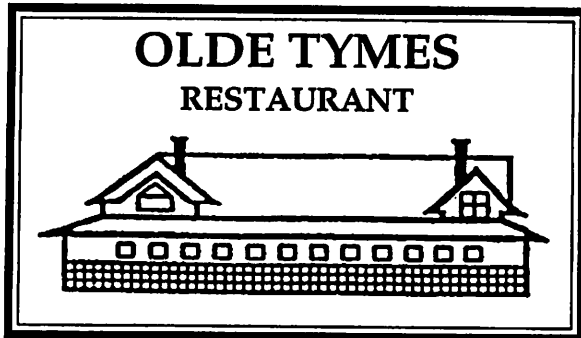
**ATM Only locations:**

Backus Hospital • Norwich

Better Valu Supermarket • Lisbon



Breakfast • Lunch • Dinner



**Full Catering Services • Open Daily**

360 W. Main St.  
Norwich, CT 06360

Rodney & Lucille Green  
(860) 887-6865

## DiFiore's Quality Car Care



Auto Detailing and  
Car Cleaning Center  
Gift Certificates Available  
Free Pick-Up & Delivery  
Fully Insured

Bumper Scuffs • Chip Repair  
Scratch Removal  
Interior Restoration  
Custom Accessories  
Rubber - Plastic Trim Restoration

*Ask about our Chip Guard Protection.  
Ask about our Level 4 Detailing Service.*

BONDED & INSURED  
FREE ESTIMATES

**886-8151**



# TRADITIONS

**BRIDAL - FORMAL WEAR - TUXEDOS**

**DETAILS MAKE THE DIFFERENCE**  
Complete Wedding Center  
Custom Designs & Expert Alterations  
Tuxedo Sales & Rentals

Hours **Tues. & Thurs. 9:30 am - 9:00 pm**  
**Weds. & Fri. 9:30 am - 5:30 pm**  
**Sat. 10 am - 4 pm & Sun. Noon - 4 pm**

Norwich **886-6966**

**363 WEST MAIN ST., NORWICH**  
I-395 Exit 80/ East Rt. 82

## TRADITIONS

*would like to wish  
The Second Step Players  
The Best of Luck  
in this year's performance  
at the O'Neill Theater*

*and The Second Step Players offer our thanks to*

**TRADITIONS**

*for donating the tuxedos worn during tonight's show*



20

## Adult Programs



Lawrence and  
Memorial  
Hospital

Comprehensive IOP & PHP Treatment

- Anxiety Disorders
- Dissociative disorders
- Bipolar disorders
- Depressive disorders
- Personality disorders
- Adjustment disorders
- Eating disorders
- Schizophrenia
- Dual diagnosis
- Survivor Issues

CHAMPUS, Medicare, Medicaid, SAGA and most other insurances accepted. Sliding scale available.

For information or appointment, call 444-5141

*Many thanks to the following  
businesses for serving as  
Ticket Outlets for this year's Show:*

Greene's Books and Beans  
140 Bank Street, New London

Magazines and More  
77 Salem Turnpike, Suite 105  
Norwich, CT

Our ticket outlets, and the businesses that advertise in this program have supported us generously. Please use this program as a reference, and

*support the businesses that  
support the Second Step Players!*



*Congratulations Second  
Step Players on 15 years  
at the O'Neill!*

# SMHA

Southeastern Mental  
Health Authority

*"Opening the door to recovery"*

Brief Care Program • Mobile Outreach Team  
ACCESS Team • Young Adult Services  
Community Integration Program  
Community Support Program  
Standard Case Management  
Housing Office  
Forensic Services • Jail Diversion Services  
Behavioral Health Unit • Basic Needs Program  
Community Options • Consumer/Family Liaison

SMHA is a State of Connecticut,  
Dept. of Mental Health & Addiction  
Services CARF accredited facility.  
Accredited in:

Mental Health Programs: Assertive  
Community Treatment, Case  
Management, Crisis Intervention,  
Residential Treatment  
Alcohol and Other Drug Programs:  
Detoxification

401 W. Thames. St., Norwich, CT • (860) 859-4500



The Most Comprehensive  
Behavioral Health Center in Connecticut



## UNITED SERVICES, INC.

- Adoption Services
- Adult Outpatient Services
- Alcohol and Substance Abuse Services
- Bilingual Services
- Child and Family Services
- Community Support Programs
- Domestic Violence Program
- Emergency Services/24-Hour
- Crisis Intervention
- Individual, Couple and Group Counseling
- Employee Assistance Program
- Training & Consultation Services to Business
- Juvenile Justice Center
- Multicultural Parent Support Center
- Parenting Services
- Prevention Services
- Psychiatric Services
- Support, Self-Help Groups
- Youth and Community Services

### Professional Services Provided by

Licensed, Certified Psychiatrists, Psychologists, Clinicians

Most Services Covered by Insurance

Sliding Fee Scale Available

Confidential Day and Evening Appointments

132 Mansfield Ave., Willimantic, CT 06226  
456-2261

1007 North Main St., Dayville, CT 06241  
774-2020

233 Route 6, Columbia, CT 06237  
228-4480

303 Putnam Rd., Wauregan, CT 06387  
564-6100

## MALLOVE'S

Fine Jewelry Since 1919

Diamonds • Watches • Fine Contemporary & Antique Jewelry  
China, Crystal & Silverware • Estate Jewelry Bought & Sold  
Custom Jewelry Design • Expert Jewelry & Watch Repair  
Bridal Registry • Appraisals, Engraving

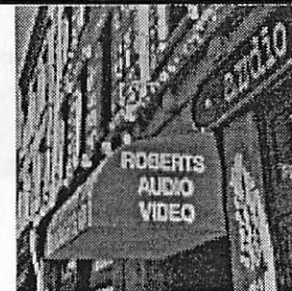
74 State St.  
New London, CT

(860) 442-4391

Mon.-Thur. 9:30-5:30,  
Fri. 9:30-7:00, Sat. 9:30-4:00

## One Touch to Music!

- Home Automation
- Home Installation
- Used Stereo
- Home Theater
- Networking
- Multi-room Audio
- Pre-Wire New Homes
- In-Store Repair
- Plasma Flat TV
- Established 1934



**ROBERTS** Audio • Video  
90 Bank Street New London

[www.robertsav.com](http://www.robertsav.com)

442-5314

**J. SOLOMON INC.**

**OFFICE SUPPLY**

[www.solomons-officesupply.com](http://www.solomons-officesupply.com)

208 Bank Street  
New London, CT

Tel: 860-443-8461  
Fax: 860-440-3177

M-F: 8-5:30; Sat. 9-1

Fine Pens, Leather Goods, Greeting Cards & More

*earning your business every day*

# EUROCAR<sup>+</sup>S

**SALES & SERVICE**

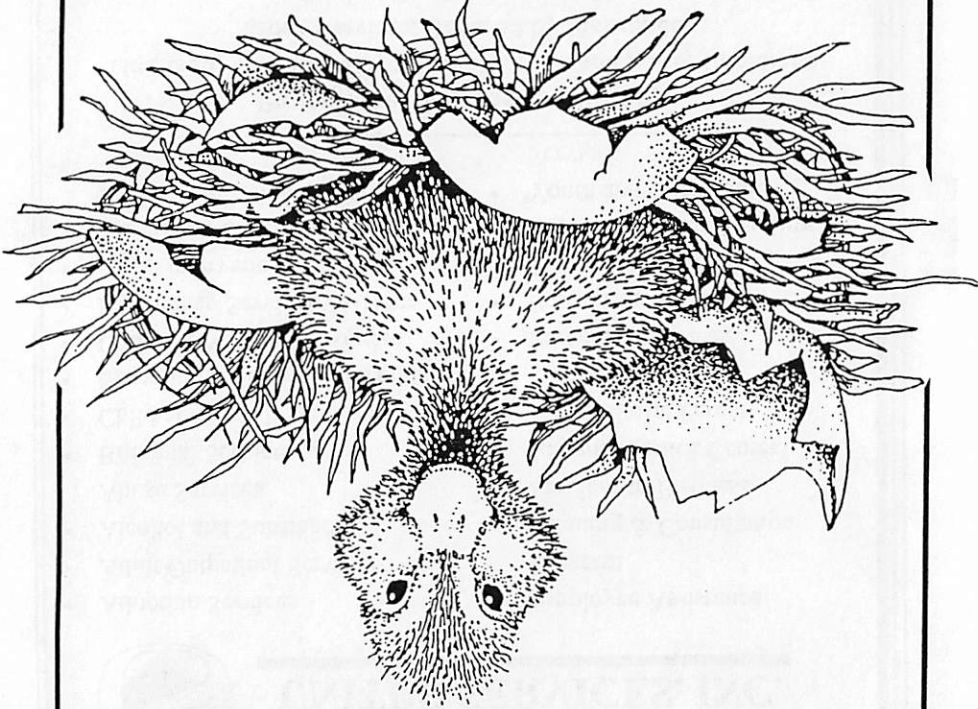
- All cars include 6 mos/6,000 mile major drivetrain warranty.
- Additional warranties available.
- All cars fully serviced and inspected.
- Financing available.

444-2001

Mark Bussolotti  
Owner

538 Poquonnock Road  
Groton, CT 06340

[www.eurocarsplus.com](http://www.eurocarsplus.com)



Discover a Magical Moment  
at Olde Mistick Village

From the moment you arrive at  
Olde Mistick Village a special  
feeling comes over you.  
Duck ponds, flower gardens  
and more than 60 quaint village  
shops transport you into an en-  
chanting world of 19th century  
charm. Here you'll discover  
unique and wondrous items  
and gifts from all over the  
world.  
Come wander through Olde  
Mistick Village and feel the  
magic.  
For a complimentary special  
events calendar, call or write:  
Olde Mistick Village, PO Box  
176, Mystic, CT 06355  
(860) 536-4941.  
Olde Mistick Village

**Ocean Pizza  
Palace**

Taste Tempting Food  
Featuring  
American-Italian  
& Greek Cuisine

88 Ocean Avenue  
New London, CT

**443-0870**

Serving Fine Food Since 1962

**GRIDLOCK**  
Grille &

Serving  
• Breakfast  
• Lunch  
• Dinner

**Open Daily at 7:30  
am**

566 Colman Street  
New London, CT  
06320

[www.gridlockgrille.com](http://www.gridlockgrille.com)

Good Luck Second Step Players!

from

**Billy Wilson's**

57 Broadway

Norwich, Ct 06360

**887-8733**

## Gayle Hansley

**Foot Reflexology**  
In The Comfort of Your Home

*Day and Evening Appointments Available*  
**(860) 887-5596**



Your **TELEPHONE** can make money  
for **Second Step Players** at  
**NO EXTRA COST TO YOU!**

**SNET** has pledged to give Artreach  
5 cents for every dollar you spend  
on the long-distance calls you make from your home.

**How do I sign up to have SNET  
donate \$\$ to Second Step Players?**

All you need to do is have a copy of one of your old phone  
bills in hand, call **1-800-635-7638** and tell them you want  
to enroll in the **Community Connections** program. When they  
ask you for our code number, tell them it is **3373**. That's it!

**Is your college class or civic organization looking for speakers?  
Want to learn more about mental illnesses?**

Call Ada Amaro (859-4652) or Becca Atkins (887-0014), and  
request our presentation entitled

### **Mental Illness: Myths & Reality**

The presentation consists of:

- A brief talk on common myths about mental illness
- A brief talk on recovery from mental illness
- A mini-performance by the Second Step Players
- A group discussion

The Community Education Committee consists of members from Artreach,  
Inc., First Step, Reliance House, SMHA, The Eastern Regional Mental  
Health Board, and CT Legal Rights.

## COMMUNITY OPTIONS

*A service of the Southeastern Mental Health Authority*

- Obtain information about Recovery from mental illness, addiction, and trauma experiences.
- Obtain information about local, state and national resources helpful to the recovery community; also, learn where to find help, support and advocacy information.
- Participate in education about Mental Illness and Recovery
- Participate in mutual support groups where the collective knowledge and caring of people in recovery can help you today, and you can help others.

**CALL (860) 859-4656** for more information.

## Live Large!



*Best Wishes, Second Step Players.  
Keep up the good work!*

*a friend from Kennit Square, PA*



24

In association with the Norwich Arts Council,

The Second Step Players present. . .



**Not Nearly Normal:  
A Relevant and Irreverent  
Look at Mental Illness**



October 26 and 27, 2001  
7:30 pm  
at the Donald Oat Theater  
62 Broadway  
Norwich, CT

for further information,  
call Becca Atkins at 860-887-0014

### Tickets By Mail Order Form

Please mark number of tickets you wish to purchase beside the night you want to attend. Mail check and order form to:

Artreach, Inc., 401 W. Thames St., Unit 702 • Norwich, CT 06360

*It's the Only Place on the Planet  
where it PAYS to say you have a Mental Illness!*

Friday, October 26, 2001

\_\_\_\_\_ #DIAGNOSED @ \$10.00 each

\_\_\_\_\_ #UNDIAGNOSED @ \$12.00 each

Saturday, October 27, 2001

\_\_\_\_\_ #DIAGNOSED @ \$10.00 each

\_\_\_\_\_ #UNDIAGNOSED @ \$12.00 each

Add up your total purchase price \$ \_\_\_\_\_

Additional donation? \$ \_\_\_\_\_

Name \_\_\_\_\_

Address \_\_\_\_\_

City, State, Zip \_\_\_\_\_

## THE SECOND STEP PLAYERS

The Second Step Players, a professional performing troupe comprised of performers and production personnel who have experienced or been labeled with mental illnesses, perform locally and tour the East Coast, inspiring others who are diagnosed with psychiatric disorders and educating those who are not. We have had the opportunity to perform for colleges and school, as well as groups of consumers, providers of mental health services and the public.

We spend our Winters both touring and working on our annual Come Together Coffeehouse. The 2001 Coffeehouse was performed in April. We had approximately thirty vocalists working with two bands to bring together a fun evening of music.

In October 2001, we will start touring again. This year, we are excited that we will kick off the touring season locally. In The Second Step Player's first ever show at the new Donald Oat Theater in Norwich, we will present the material which we will tour throughout the next calendar year. If you enjoy the show tonight, tell all of your friends and come with them to see the show at the Donald Oat Theater on October 26 and 27, 2001, at 7:30 pm. Tickets are available for sale in the lobby. There is also a convenient tickets-by-mail order form in this program.

The Second Step Players are also available to present Dr. Patricia Deegan's "Hearing Voices Workshop." This workshop gives participants an opportunity to experience schizophrenia in an interactive way which leads to a deeper insight into what it's like to be a person who hears distressing voices. The workshop is particularly good for students who plan to pursue mental health professions, groups of providers, and family members of people who hear voices.

To book *The Second Step Players* for  
a performance  
or a Hearing Voices Workshop,  
please call Becca Atkins at  
(860) 887-0014.



# Artreach

...because creativity heals...

## MISSION STATEMENT

Artreach promotes healing through creativity and support of individuals with psychiatric diagnoses and their families, and challenges stigma through community education.

## STATEMENT OF PURPOSE

Artreach, Inc. believes that creativity and recreation in all their forms are profoundly empowering and consequently healing endeavors. We support people who have experienced psychiatric, physical and developmental disabilities to become performers, artists, musicians and writers or to expand their ability to recreate. As a results-oriented organization, Artreach's goals are to:

- \*\* Empower people who have experienced disabilities to create a culture of their own using role models that come from their own ranks; to celebrate their strengths and encourage them in their struggles by creating art forms that speak to their experiences and values;
- \*\* Educate the general public and future generations, through the use of cultural activities, about the value of people regardless of how they are labeled or disabled;
- \*\* Produce and tour high-quality published work, artistic exhibitions, musical recordings and performances, and theatrical events, primarily using artistic and production personnel who have experienced psychiatric disabilities;
- \*\* Provide high-quality training to artists and production personnel who have experienced disabilities;
- \*\* Provide training to other professionals in the technology involved in the production of artistic events using artistic and production personnel who have experienced disabilities;
- \*\* Expand the community-based recreational opportunities available to people who have experienced disabilities;
- \*\* Develop technologies and strategies to support people who have experienced disabilities to integrate into existing community-based recreational opportunities;
- \*\* Educate the general public and the "disability community" about the essential and pivotal role recreation plays in a complete and fulfilling life for people with or without disabilities.
- \*\* Through artistic, cultural and recreational activities, encourage consumers to acquire and actively implement into their lives socialization skills necessary to community integration and obtaining and keeping employment.



## Work Hard Play Hard

Work Hard/Play Hard is a special and exciting recreation program open to all mental health consumers who are either employed or in the process of gaining the skills necessary to obtain and keep a job. The program is special in several ways: it is primarily consumer run; all events take place entirely in the community; door-to-door transportation is provided to and from all events; and the variety and quality of recreational events provided are exceptional.

Recreational events take place on evenings and weekends.



*A group of Work Hard/Play Hard members visit Tater the Gator at a Navigators game*

Some of our favorite events this year have been attending Norwich Navigators games, Coast Guard concerts and other musical events, plays at the Long Wharf Theater and The Garde, and community events such as Sailfest and the Mystic Art Show. Our weekly

bowling and shopping trips are also well attended.

For additional information, pick up a brochure from the Button and T-Shirt Table in the lobby.



*Work Hard/Play Hard members enjoying a holiday outing*





salutes the  
talent and bravery of  
The Second Step Players

*Blue Blazes . . .*  
Serving up the  
Best of Country & Oldies

For Bookings, Call Wendy at (860) 887-5596



*"Where your wound is,  
that is where your  
genius will be"*

*-Robert Bly*

[www.magsnmore.com](http://www.magsnmore.com)

77 Salem Tpk • Salem Plaza • Rt. 82 • Norwich • 886-1855 • Open 7 days

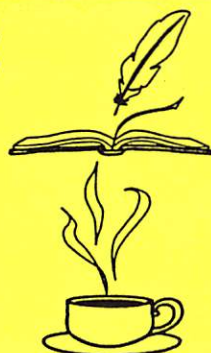
## GREENE'S BOOKS & BEANS

*Where Spirit and Mind Meet*

Jewelry • Candles • Crystals  
Greeting Cards • Incense • Gifts  
Coffees • Teas • Chai • Espresso

Phone: 443-3312

140 Bank Street, New London, CT 06320



Artreach, Inc.  
presents. . .

## THE SECOND STEP PLAYERS

# Everything



# From Soup

# To Nuts

*a relevant & irreverent look at mental illness*

with special guests *The Therapy Sisters!*

our **15th** annual show at  
The Eugene O'Neill Memorial Theater Center  
September 6th, 7th & 8th, 2001 at 7:00 PM